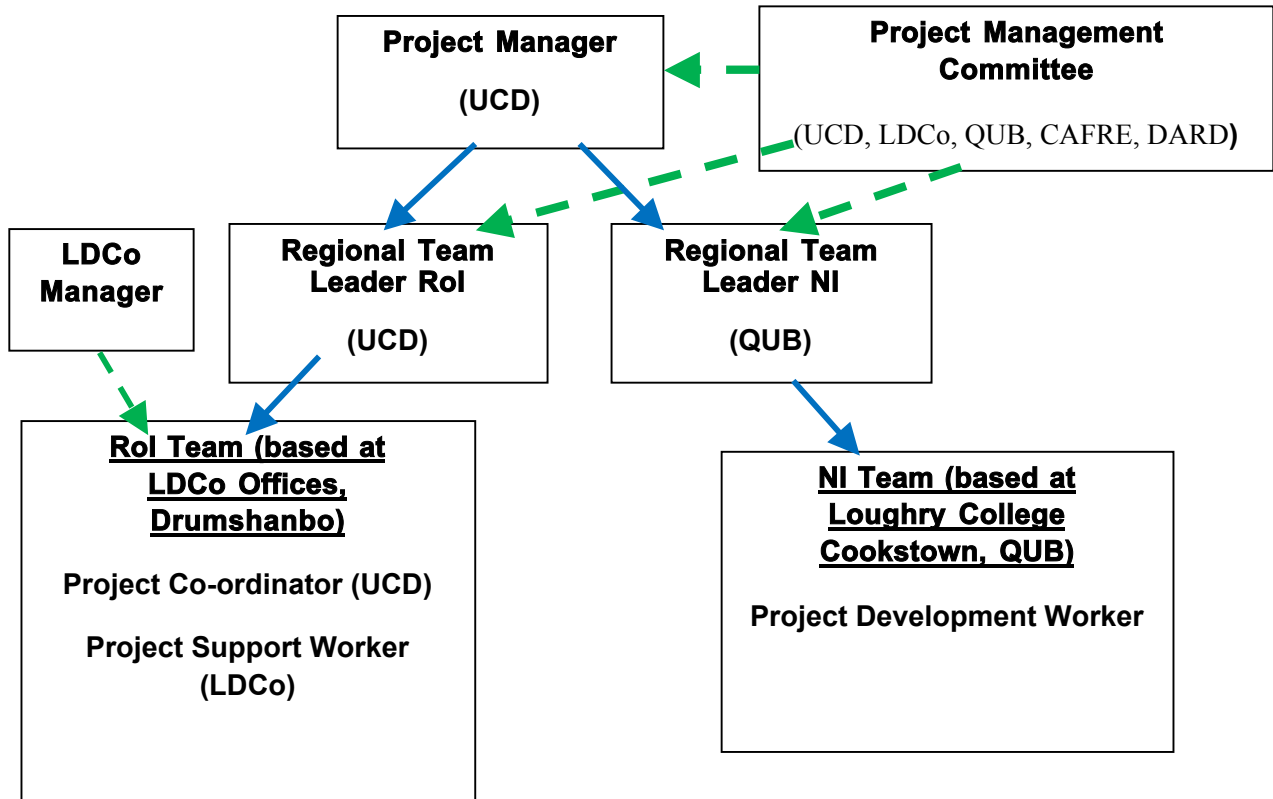


Annex 3: SoFAB PROJECT MANAGEMENT (STEERING) AND ADVISORY COMMITTEES

Figure 1: Project Management Structure



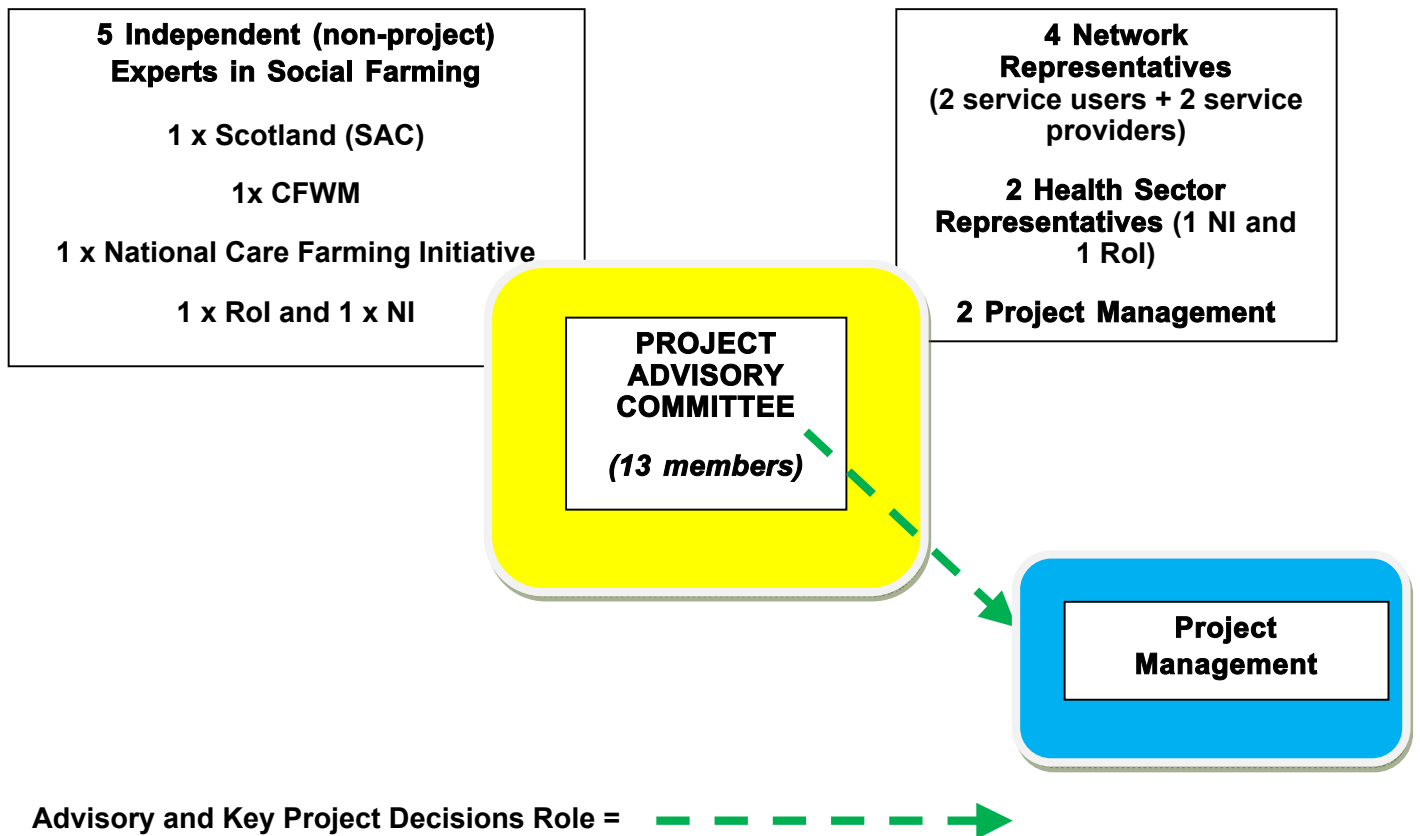
Advisory and Key Project Decisions Role =



Line Management Role =



Figure 2: SoFAB Project Advisory and Strategic Management Structure



Terms of Reference for INISF Project Advisory Committee

The Advisory Committee will act as a forum for the inclusion of a broad range of key stakeholders (at regional, national and international levels) including membership from relevant government departments and agencies, the community and voluntary sector and other organisations and institutions.

It will comprise 5 independent or non-project members; 4 representatives from the project network and 2 representatives from the project Management Committee. The Advisory Committee will be chaired by one of the independent or “external” members.

The Advisory Committee will use every opportunity to support and endorse the work of the INISF project and to advance its aims. It will achieve this by:

- Acting as a conduit through which key stakeholder interests can engage with the project
- Providing advice, practical support and consultancy to the project management team

- Commenting on and reviewing the key outputs of the project work-packages.
- Meeting up to 5 times over the lifetime of the project which will be timed to coincide with the preparation of key project outputs.
- Acting as a point of contact between INISF and their own organization /institutions
- Providing access to their organisational resources where possible
- Raising awareness of the issue of social farming in general, and the INISF project in particular, within their own organizations /institutions.